

# TMP 9 - City of Chilliwack Street Lighting 2020: Evans Rd @ Wells Rd



**Figure 11.2: Intersection Lane Closure - Two-Lane, Two-Way Roadway with TCPs (Near Side) - Short and Long Duration.**  
TCPs on site to assist with vehicles, pedestrians, bicyclists and all others.

# TMP 10 - City of Chilliwack Street Lighting 2020: Evans Rd @ Wells Rd



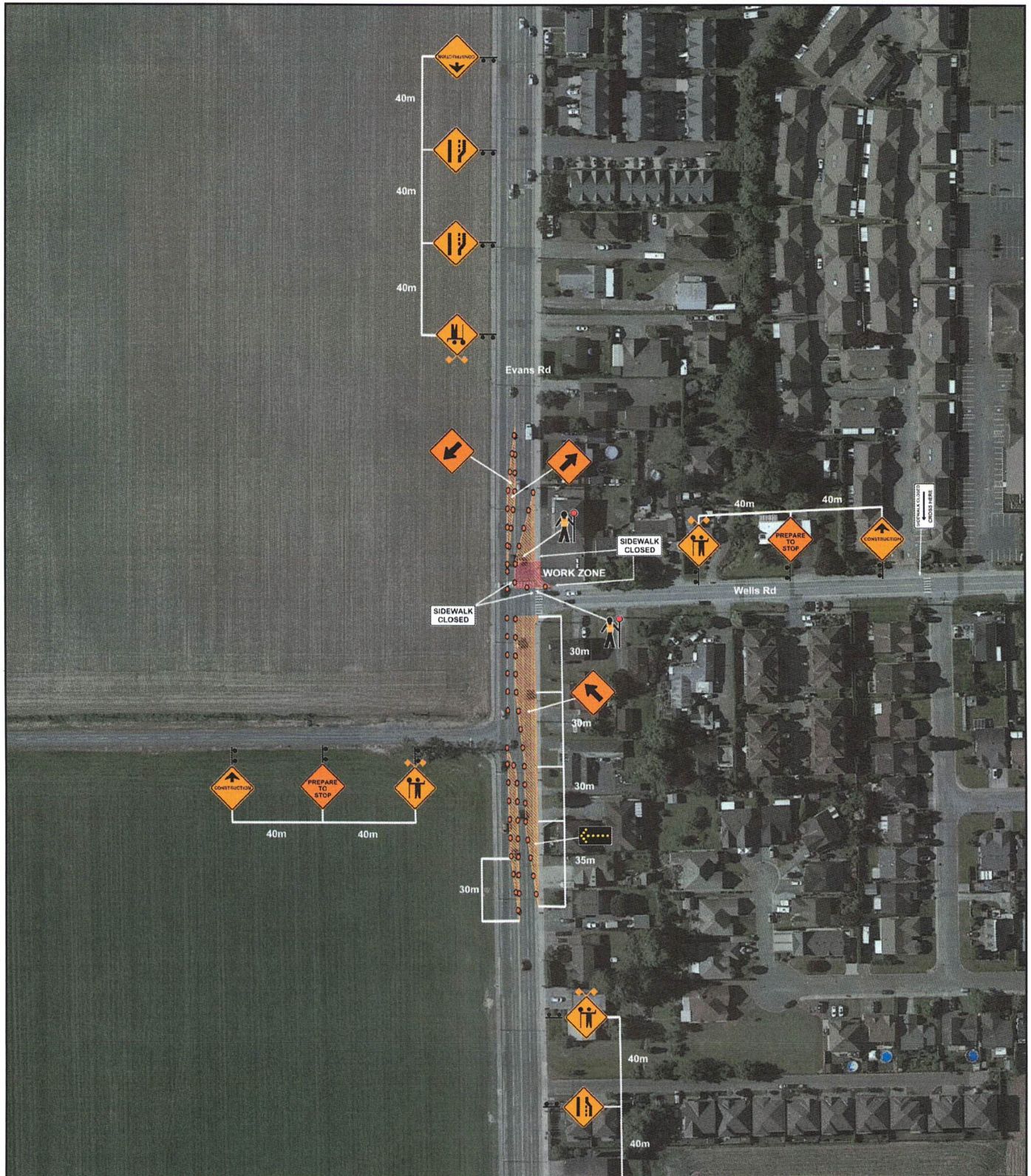
**Figure 11.2: Intersection Lane Closure - Two-Lane, Two-Way Roadway with TCPs (Near Side)  
- Short and Long Duration.  
TCPs on site to assist with vehicles, pedestrians, bicyclists and all others.**

# TMP 11 - City of Chilliwack Street Lighting 2020: Evans Rd @ Wells Rd



**Figure 11.12: Two-Lane Closure - Multilane Intersection - Short and Long Duration TCPs on site to assist with vehicles, pedestrians, bicyclists and all others.**

# TMP 12 - City of Chilliwack Street Lighting 2020: Evans Rd @ Wells Rd



**Figure 11.12: Two-Lane Closure - Multilane Intersection - Short and Long Duration TCPs on site to assist with vehicles, pedestrians, bicyclists and all others.**

# TMP 13 - City of Chilliwack Street Lighting 2020: Evans Rd @ Wells Rd



**Figure 11.12: Two-Lane Closure - Multilane Intersection - Short and Long Duration TCPs on site to assist with vehicles, pedestrians, bicyclists and all others.**